



Paving Materials Corp.

3993 E. 93rd Street
Cleveland, Ohio 44105-4096

Crushed Stone Products/Cold Mix
April 1, 2022 4:00 pm

Brown County Commissioners Court
200 S. Broadway #322
Brownwood, TX 76801

April 4, 2022
(Exhibit # 7)



March 28, 2022

Brown County Commissioners Court
200 S. Broadway #322
Brownwood, TX 76801

Subject: Crushed Stone Products/Cold Mix Bid

To Whom it may concern:

Unique Paving Materials, Corp. is only bidding Cold Mix and we are pleased to submit the Following bid prices valid through April 2023:

Pick-Up Price	\$90.00/ton
Delivered Price – Precinct#1	\$136.00/ton
Delivered Price – Precinct#2	\$134.00/ton
Delivered Price – Precinct#3	\$141.00/ton
Delivered Price – Precinct#4	\$145.00/ton

Plant location: Martin Marietta Materials 1795 TX-101 Bridgeport, TX 76426

Product: UPM® High Performance Cold Mix

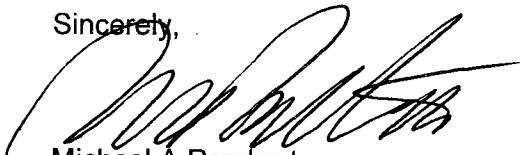
Contact information:

Michael A Pemberton – President
Ph: 216-441-4880
Email: bids@uniquepavingmaterials.com

Texas account Executive: Marcus Bower Ph: 214649-7439 Email:
mbower@uniquepavingmaterials.com

Thank you for the opportunity to bid.

Sincerely,



Michael A Pemberton
President

Enclosures

www.UniquePavingMaterials.com

3993 E. 93rd Street | Cleveland, OH 44105 | Phone 800.441.4880 | Fax 216.341.8514

REFERENCES FOR UNIQUE PAVING MATERIALS CORP.

Reference 1

City of Dallas / Water Utilities
Michelle Martinez
2545 Valleria Dr. Dallas, TX 75211
214-670-6869

Reference 2

Department of Transportation and Engineering / Denton County
Valarie Jackson
417 Old Justin Rd Argyle, TX 76226
940-349-3430

Reference 3

Martin Marietta Materials
Matt Jenkins
1795 TX-101
Bridgeport, TX 76426
972-647-7245

Reference 4

Statewide Trucking Group
John Barry
101 Industrial Blvd.
Fate, TX 75132

Reference 5

Asphalt Transport Inc.
Brad Burgess
17311 Market St.
Channelview, TX 77530
281-452-7070

REFERENCES FOR UNIQUE PAVING MATERIALS CORP.

Reference 1

City of Dallas / Water Utilities
Michelle Martinez
2545 Valleria Dr. Dallas, TX 75211
214-670-6869

Reference 2

Department of Transportation and Engineering / Denton County
Valarie Jackson
417 Old Justin Rd Argyle, TX 76226
940-349-3430

Reference 3

Martin Marietta Materials
Matt Jenkins
1795 TX-101
Bridgeport, TX 76426
972-647-7245

Reference 4

Statewide Trucking Group
John Barry
101 Industrial Blvd.
Fate, TX 75132

Reference 5

Asphalt Transport Inc.
Brad Burgess
17311 Market St.
Channelview, TX 77530
281-452-7070



UPM® Cold Mix High-Performance

by Design

It Starts with Quality Rock

All raw materials we use in making UPM® mix are selected to meet our stringent quality standards.

Lab Testing Mix Formulation

The UNIQUE lab considers specific aggregate characteristics and regional elements to design a customized formulation. The result is a region-specific mix that works every time.

Mix is Tested Before you Use it

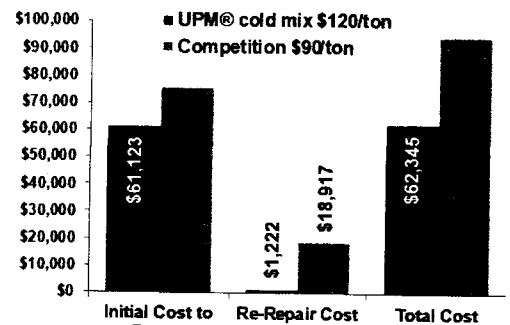
Before a mix can be certified as UPM® cold mix, it must undergo rigorous testing in our lab as well as in the field.

UNIQUE stands behind every pound of UPM mix, every time.

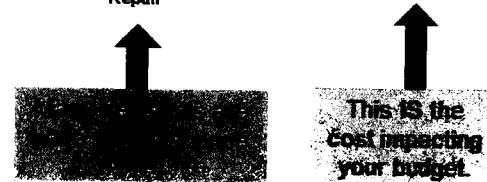
UPM® COLD MIX COST ANALYSIS FOR POTHOLE REPAIRS

Competitive Cold Mix	UPM® cold mix			
	Initial Repair	Re-Repair	Initial Repair	Re-Repair
	\$120.00	\$120.00	\$90.00	\$90.00
	100	2	100	25
	8	0	8	2
	98%	98%	75%	75%
	\$16.67	\$16.67	\$16.67	\$16.67
	\$6.67	\$6.67	\$6.67	\$6.67
	\$5.70	\$5.70	\$3.15	\$3.15
	\$29.03	\$29.03	\$26.48	\$26.48

>In the above example, 1 ton of UPM mix is equal to 1.2 tons of competitive cold mix.
 >Repair material is less than 10% of repair cost, but can significantly increase total cost.
 >The 34% reduction in potholes improves safety for worker by reducing exposure to traffic



Cold Mix Source	Initial Cost to Repair	Re-Repair Cost	Total Cost
UPM® cold mix \$120/ton	\$61,123	\$1,222	\$62,345
TOTAL Saving with UPM® mix			\$32,238
			Saving 34%



- UPM® mix is conveniently available in:
- > Bulk tons at approved producers
 - > 50# weatherproof plastic bags
 - > 60# 5-gallon plastic pails
 - > 2000# super sacks
 - > 660# 55-gallon steel drums
 - > 24# 2-gallon plastic pails



ROADS • BRIDGES • DRIVEWAYS
 UTILITY CUTS • HIGHWAYS • RAILROAD CROSSINGS
 PARKING LOTS • CART PATHS



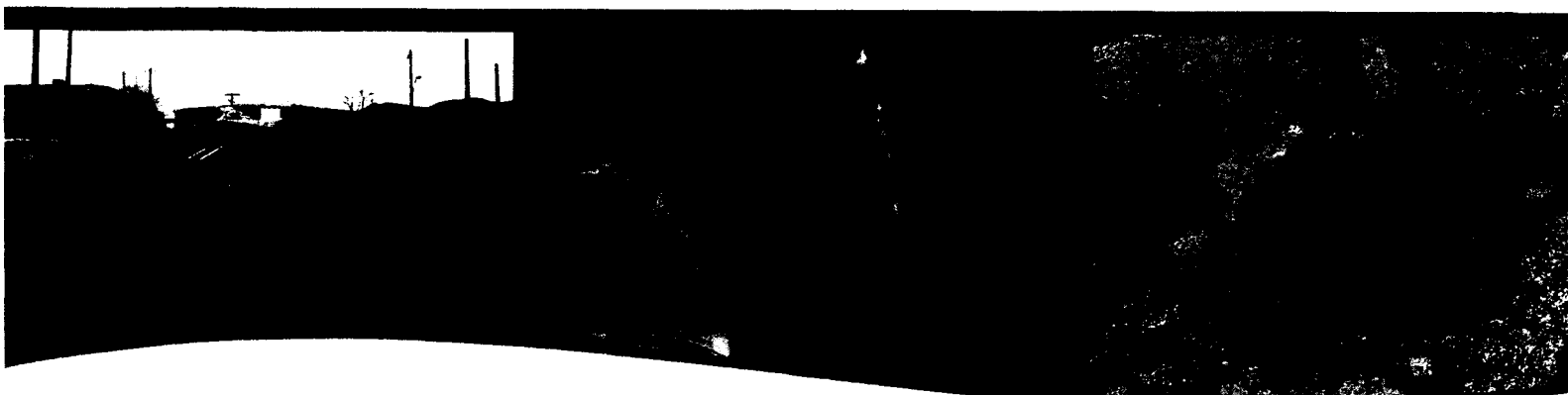
Corporate Office | 800.441.4880 | 3993 E. 93rd Street, Cleveland, OH 44105 | uniquepavingmaterials.com

UPM® mix is a product of UNIQUE Paving Materials Corp. UPM® mix is a registered trademark of UNIQUE Paving Materials Corp.



UNIQUE, The Industry Leader

UPM® Mix: The Best in Permanent Pavement Repair



UPM® Cold Mix is the Benchmark Other Cold Mix Providers Try to Emulate

While many cold mix suppliers falsely claim their product is comparable to UPM® mix, none have been able to match the high-performance of our cold mix asphalt.

UNIQUE's proprietary additives and stringent quality control procedures for producing **UPM** mix ensure that you get a pavement repair solution that will outlast the surrounding pavement. **We guarantee it!**

We Define UPM® Cold Mix Quality as Guaranteed Performance

When too much emphasis is placed on producing the cheapest cold mix, performance suffers.

Our customers see the value and savings in higher quality material that works permanently versus buying the cheapest material, then having to spend more to repair the same holes over and over.



ALL WEATHER SOLUTIONS

UPM® mix is the only real high-performance cold mix you can use to permanently repair potholes in any climate.

How Does Your Current Cold Mix Stand up to UPM® Mix?

- › Ongoing support for the life of the material
- › Reduces total repair costs
- › Nationwide field support
- › Region-specific formulations that ensure **UPM** mix works
- › On-site training in best repair practices
- › Unmatched quality control in every mix
- › Warranty—guaranteed high performance

UPM® mix can reduce your total repair costs by delivering more value in a material that lasts.



ROADS • BRIDGES • DRIVEWAYS
UTILITY CUTS • HIGHWAYS • RAILROAD CROSSINGS
PARKING LOTS • CART PATHS

UNIQUE®
ASPHALT
SOLUTIONS

UNIQUE PAVING



MATERIALS CORP.

Permanent Pavement
Repair Material

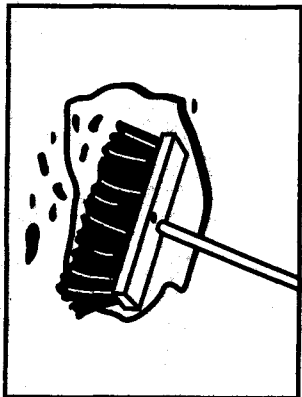
HIGH PERFORMANCE GUARANTEE

UPM® COLD MIX IS GUARANTEED TO PERFORM AS FOLLOWS:

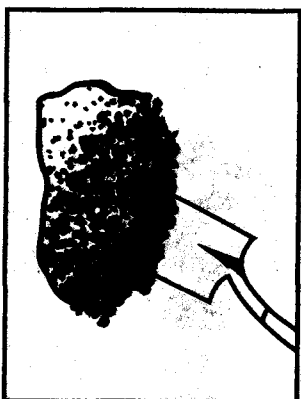
- Patches using **UPM** Permanent Pavement Repair Material will outlast the surrounding pavement when properly applied (see other side).
- Winter grades will remain workable for use in sub-freezing temperatures.
- No primer required.
- Will not bleed through hot mix overlays.

*If **UPM** cold mix does not meet these high-performance guidelines, **UNIQUE** Paving Materials Corp. will replace it.
We want our customers to be like our material - **PERMANENT!***

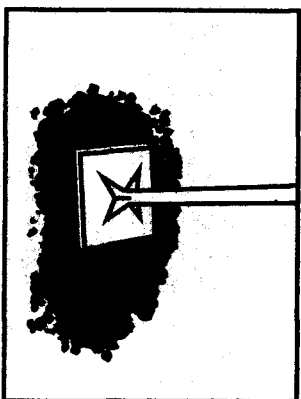
3 EASY STEPS TO PATCHING SUCCESS



PREPARE: Remove all loose dust, dirt and debris by sweeping with a broom.



APPLY: Shovel or pour UPM® mix into the hole. Level out 25% higher than the existing pavement to allow for compaction. If patch is deeper than 4", apply and compact in separate 2" layers. Apply only over a solid base.



COMPACT: Compact with a hand tamper, roller or plate compactor.

UPM BULK STOCKPILING: Properly store UPM mix according to standard commercial practices.

- Place stockpile on a clean pad of asphalt or concrete and keep material from contamination.
- Dusty conditions will shorten UPM mix's stockpile life and may reduce workability.



The Best Stuff

CUSTOMER SERVICE

800.441.4880 | Fax 877.689.8117

www.upm.com

1000 W. 10th Street, Suite 100, Oklahoma City, OK 73106

UPM
niqye
Paving Materials Corp.